

The Candy Man

from *Willy Wonka JR.*

Words and Music by **LESLIE BRICUSSE**
and **ANTHONY NEWLEY**

CUE 05—Attacca from No. 4 "Candy Man Underscore"

Moderately ♩ = ca. 140

JAMES: ① Anna

CHARLIE, JAMES & MATILDA: ② Kara

I can't stop eat - ing sweets! All those won - der - ful

poco rit.

CHARLIE: ③ Anna

poco accel.

JAMES: ④ Elise

Wil - ly Won - ka treats! You can keep the oth - ers, 'cos

ALL:

All 4
MATILDA:

me, I'm a Wonk - er - er! When it comes to

rit.

can - dy, Wil-ly's the con-quer-or!

ALL:

from off

Con-quer-or!

The CANDY MAN enters with an ornate Victorian candy cart filled with beautifully displayed Wonka candy.)

Shuffle (♩ = ♪) ♩ = ca. 134

step scuff to move in from RAL into positions

CANDY MAN:

step scuff

step touch

Who can take a sun - rise, _____
Who can take a rain - bow, _____

sprink - le it with dew, _____
wrap it in a sigh, _____

side gallop R & L

step leap

cov-er it in choc-'late and a mir - a - cle or two? The
soak it in the sun and make a straw - b'ry-lem - on pie? The

Can - dy Man. _____ The Can - dy Man can. _____

2 levels

Can - dy Man _____ The Can - dy Man can. _____

All stop

sway R & L

The Can - dy Man? _____ The

1st levels

1st

CANDY MAN: *ALL*

The Can-dy Man can 'cos he mix-es it with love and makes the
hands behind backs bounces

Can-dy Man can!

world taste good!

KIDS: *skip around stage*

The Can - dy Man makes ev-

- 'ry - thing he bakes sat - is - fy - ing and de - li - cious.

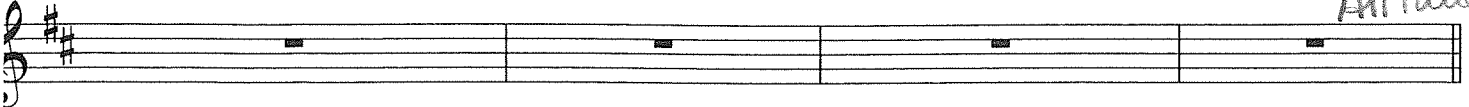
All Freeze

CANDY MAN: POT-LOVISA



Talk a-bout your child-hood wish-es! You can e-ven eat the dish-es!

All laughs

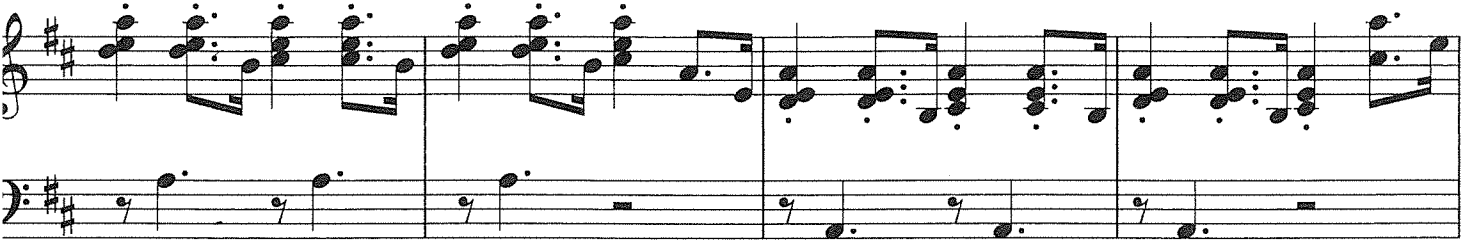
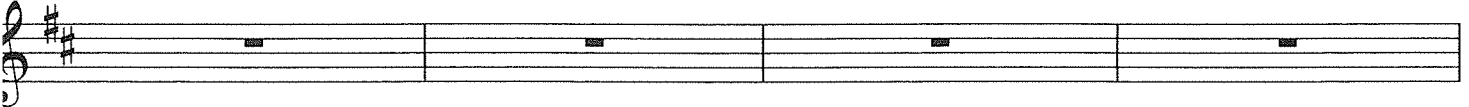


run to original places

ZOE

CANDY MAN: Nothing for you, Charlie?

CHARLIE: Not today. I don't want to spoil my appetite.



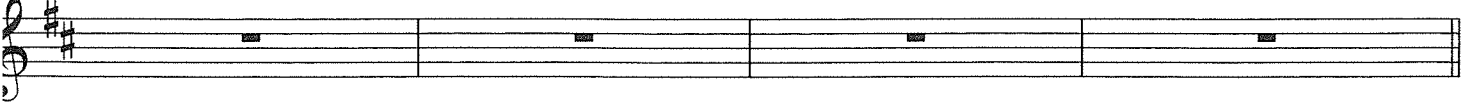
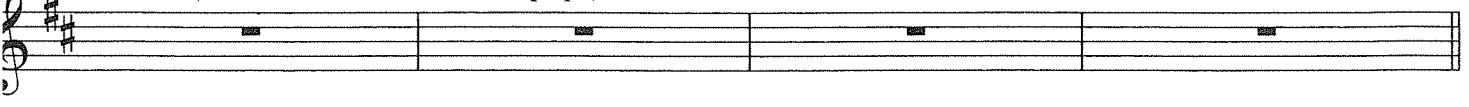
Pivot contagion

EMILY

CANDY MAN: Looks like your appetite could use a little spoiling. Here, take one of these - on the house. (He hands Charlie a lollipop.)

hop hop hop hop hop hop

CHARLIE: Really? Thanks! (The KIDS place lollipops in their mouths.)



CANDY MAN: *ends repeat chorus*

Musical notation for Candy Man's first line. Treble clef, key signature of two sharps (F# and C#). Lyrics: Who can take to-mor-row, _____ dip it in a dream, _____

KIDS: (lollipops in mouths) *ists*

Musical notation for Kids' first line. Treble clef, key signature of two sharps. Lyrics: Muh ma muh mu ma wo, _____

Accompanying piano accompaniment for the first two lines, featuring chords in the right hand and a bass line in the left hand.

Musical notation for Candy Man's second line. Treble clef, key signature of two sharps. Lyrics: Sep-a-rate the sor-row and col-lect up all the cream? The

Musical notation for Candy Man's third line. Treble clef, key signature of two sharps. Lyrics: Mip i i i mweem, Oo. _____

Accompanying piano accompaniment for the second and third lines, including a large slur over the right-hand chords.

Musical notation for Candy Man's fourth line, starting at measure 58. Treble clef, key signature of two sharps. Lyrics: Can - dy Man. _____ The Can - dy Man can! _____

Musical notation for Kids' second line. Treble clef, key signature of two sharps. Lyrics: Ma man - dy mam! _____ Ma

Accompanying piano accompaniment for the fourth and fifth lines, featuring chords in the right hand and a bass line in the left hand.

The Can-dy Man can 'cos he mix - es it with love and makes the
(Remove lollipops)

man - dy man can! The Can-dy Man can 'cos he mix - es it with love and makes the

CHARLIE: Thanks for the candy. Oh yeah, my dad wants to know if we can borrow the paper?

world — taste good. _____

step stuff in a circle x3
(The KIDS drift off one by one, humming.)

world — taste good. _____

Mm. _____

mp

CANDY MAN: I'm afraid it's yesterday's paper...here you go.
What's the world coming to when a family can't even afford the paper?

Mm. _____

Mm. _____

MRS. BUCKET: (offstage) Charlie!
Your soup's getting cold.

rall.

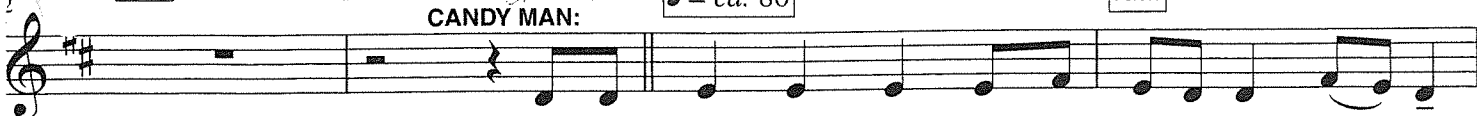
straight 8ths

EMAN

$\text{♩} = \text{ca. } 80$

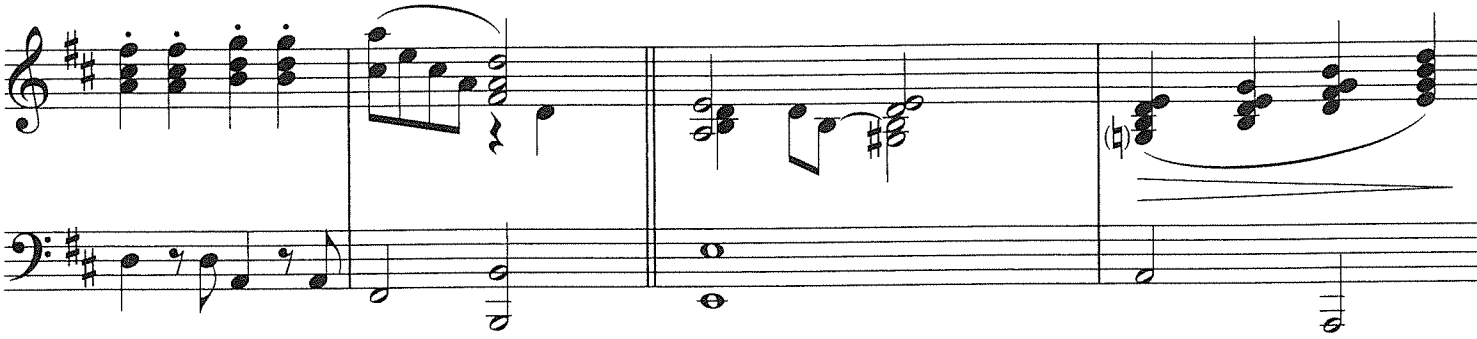
rall.

CANDY MAN:

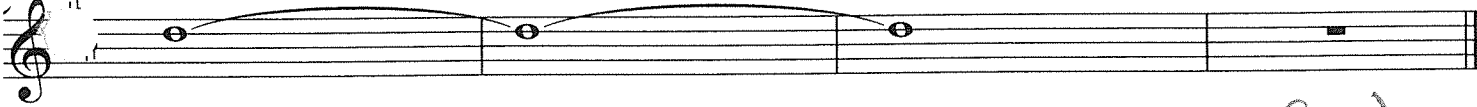


And the world tastes good 'cos the Can-dy Man thinks_ it

turn to audience Freeze



Shuffle ($\text{♩} = \text{♩} \text{ } \text{♩} \text{ } \text{♩}$) $\text{♩} = \text{ca. } 134$ (Charlie returns home with the paper as WONKA exits with the candy cart.)



should! _____

Bow

