

Curtain Music

CUE:
Segue from No. 37 - "Finale (Part 6)"

All groups join 5-6 onstage

A piano accompaniment system in 4/4 time. The right hand features a melodic line with eighth notes and quarter notes, while the left hand provides a steady bass line with quarter notes. A piano dynamic marking (*p*) is present at the beginning. The system is divided into two measures by a bar line.

ALL:

5 *p*

Care-ful the things you say, — child-ren will lis - ten. —

A vocal line starting at measure 5. It includes a piano dynamic marking (*p*) and a triplet of eighth notes. The lyrics are written below the staff.

A piano accompaniment system in 4/4 time, continuing from the first system. It features a melodic line in the right hand and a bass line in the left hand. The system is divided into two measures by a bar line.

9

Care-ful the things you do, — child-ren will see. And

A vocal line starting at measure 9. It includes a triplet of eighth notes. The lyrics are written below the staff.

A piano accompaniment system in 4/4 time, continuing from the second system. It features a melodic line in the right hand and a bass line in the left hand. The system is divided into two measures by a bar line.

learn. _____ Child-ren may not o-bey, _____ but

Child-ren may not o-bey, _____ but
child-ren will lis - ten. _____

Child-ren will look to you. _____ for

which way to turn, _____ to learn what to be. _____

which way to turn, _____ to learn what to be. _____

which way to turn, _____ to learn what to be. _____



25 *p*

Care-ful be - fore you say, ————— "Lis-ten to me." ————— Child-ren will

p

29 *poco accel.*

lis - ten. —————

p cresc.

L'istesso—alla marcia

1 (ALL:) *f*

In - to the Woods, where no - thing's clear, where witch - es, ghosts and wolves ap - pear.

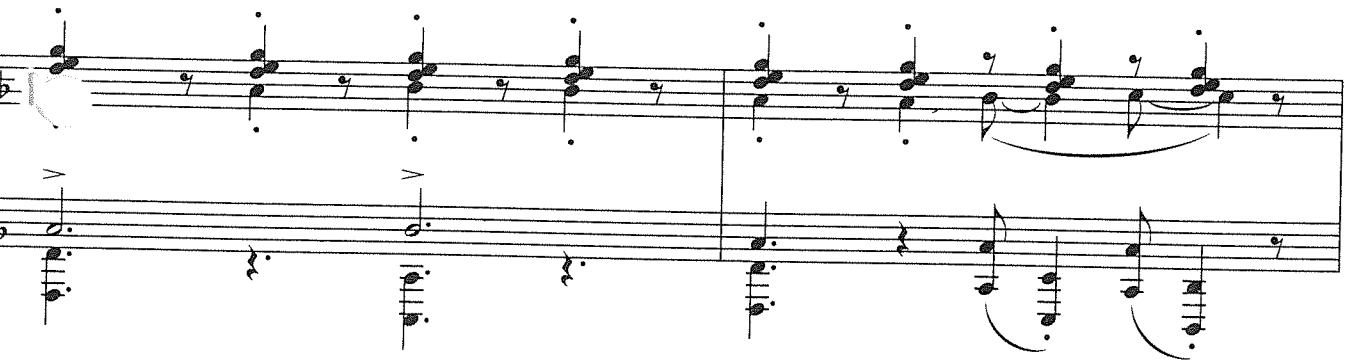
f



In - to the Woods and through the fear, you have to take the jour - ney.



In - to the Woods and down the dell, in vain per-haps, but who can tell?

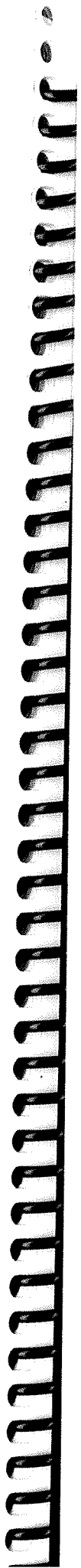
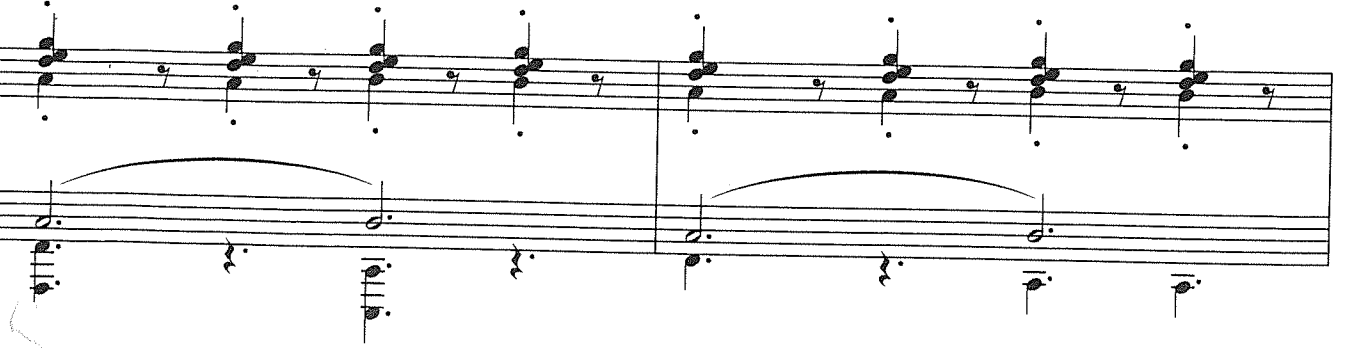


MEN:

WOMEN:



In - to the Woods to lift the spell, in - to the Woods to lose the long - ing.



39 MEN: WOMEN: MEN: WOMEN:

In - to the Woods to have the child, to wed the prince, to get the mon - ey, to

41 MEN: WOMEN: MEN: ALL:

save the house, to kill the wolf, to find the fath - er, to con - quer the king - dom, to

3

have, to wed, to get, to save, to kill, to keep, to go to the Fes - ti - val!

In - to the Woods, in - to the Woods,

in - to the Woods, then out of the Woods

mf *cresc.*
p *cresc.*

ff
and hap - py ev - er af - ter!

All bow

